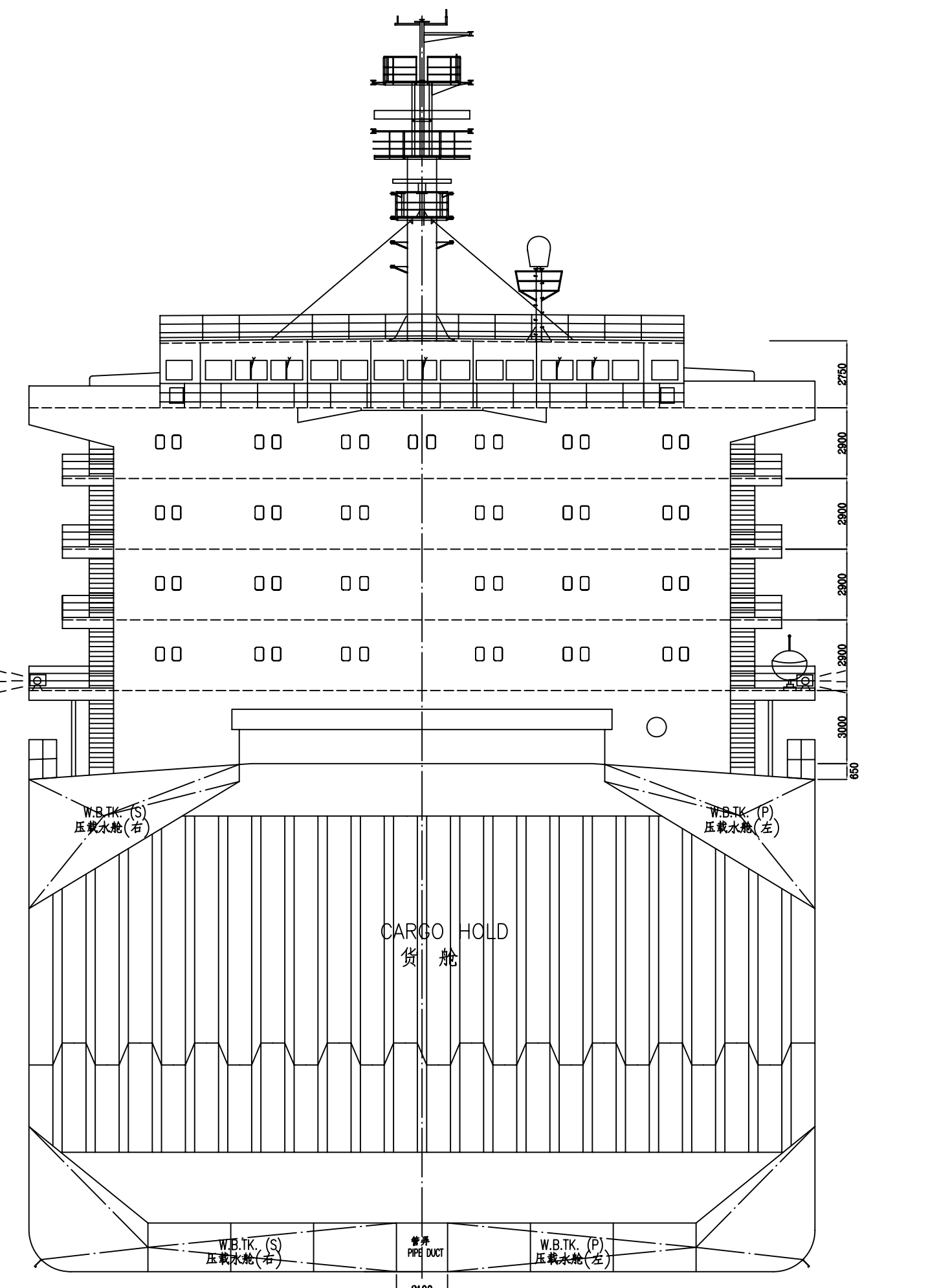
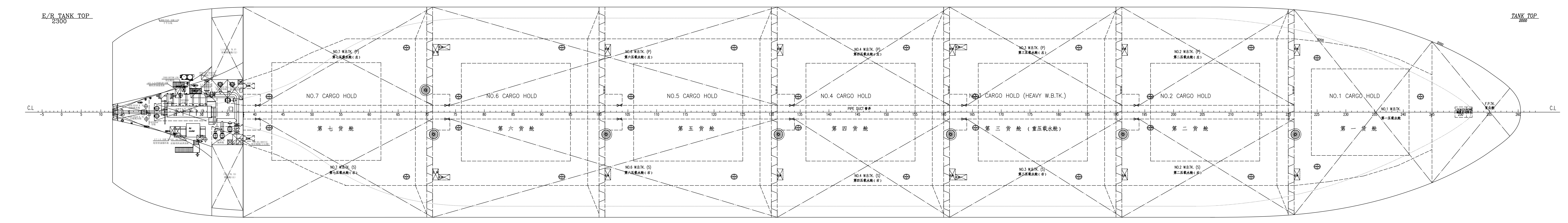
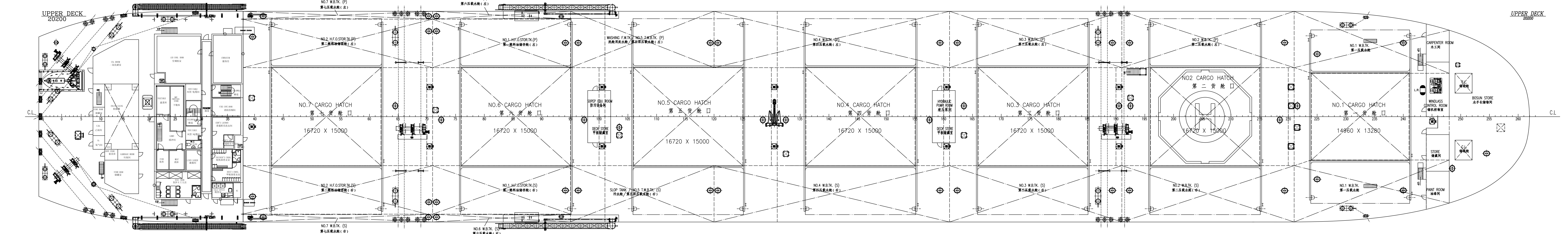
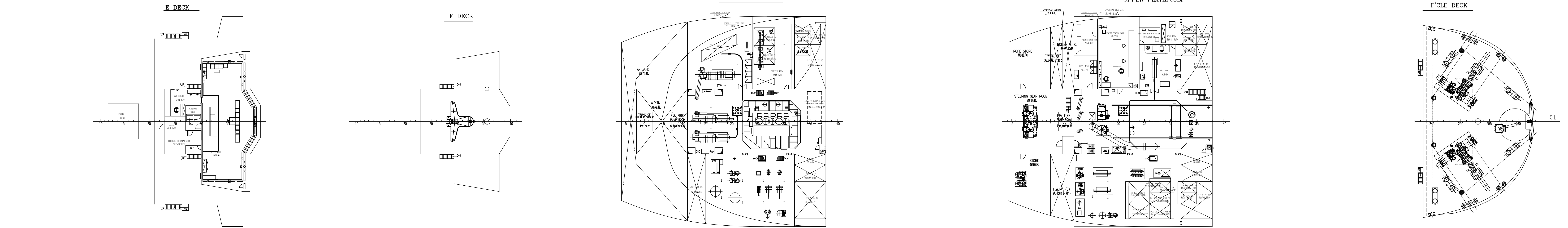
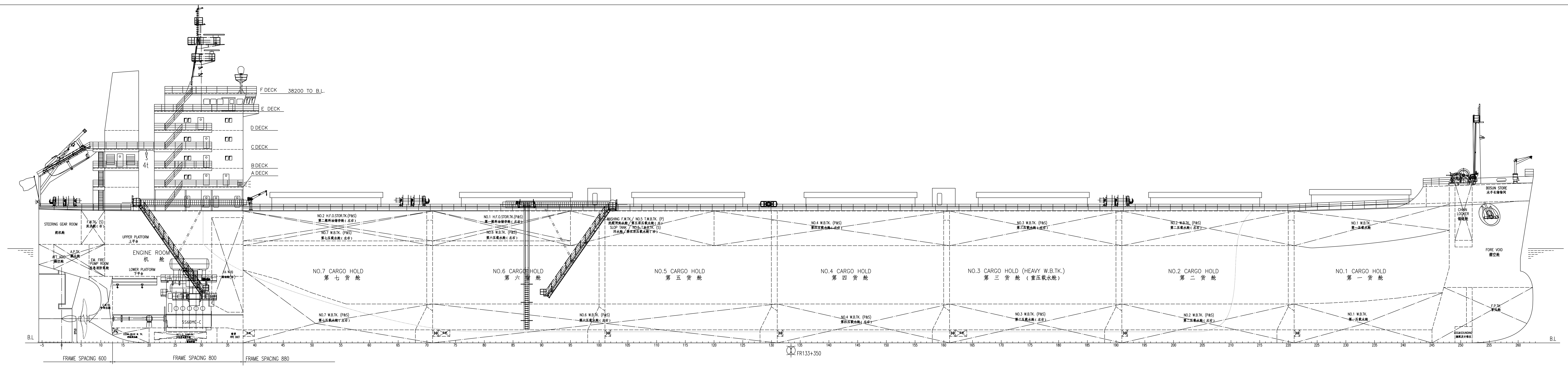
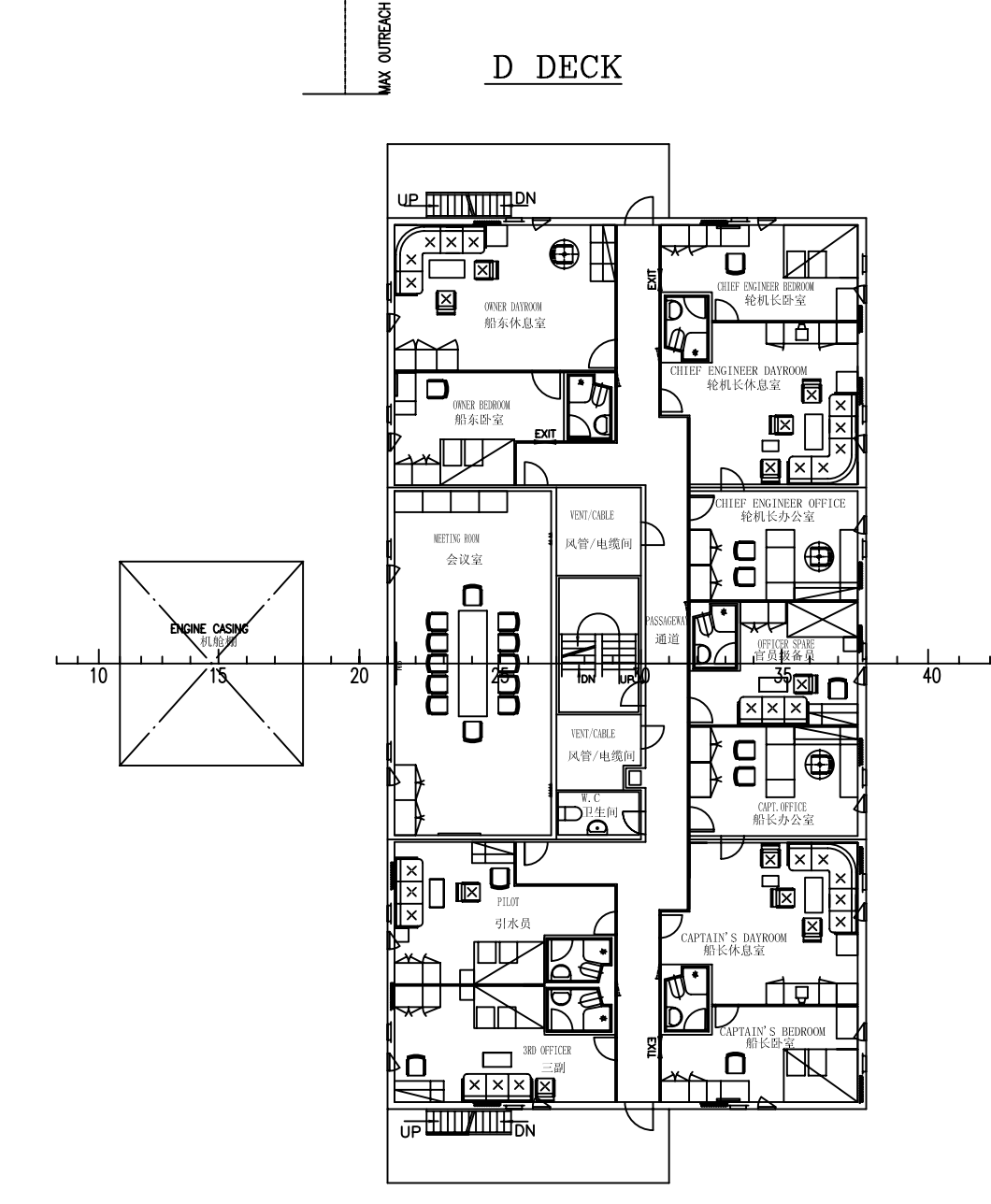
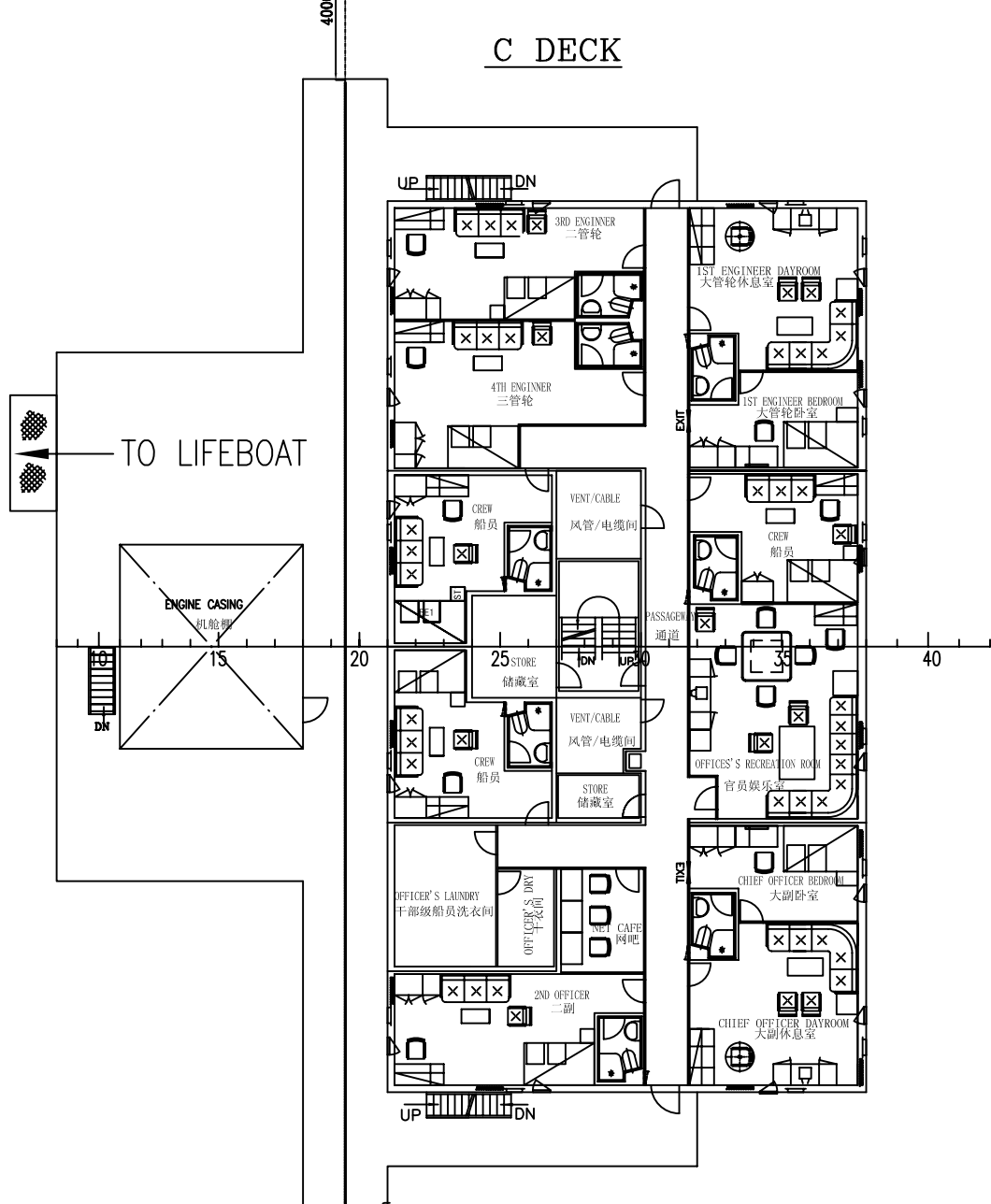
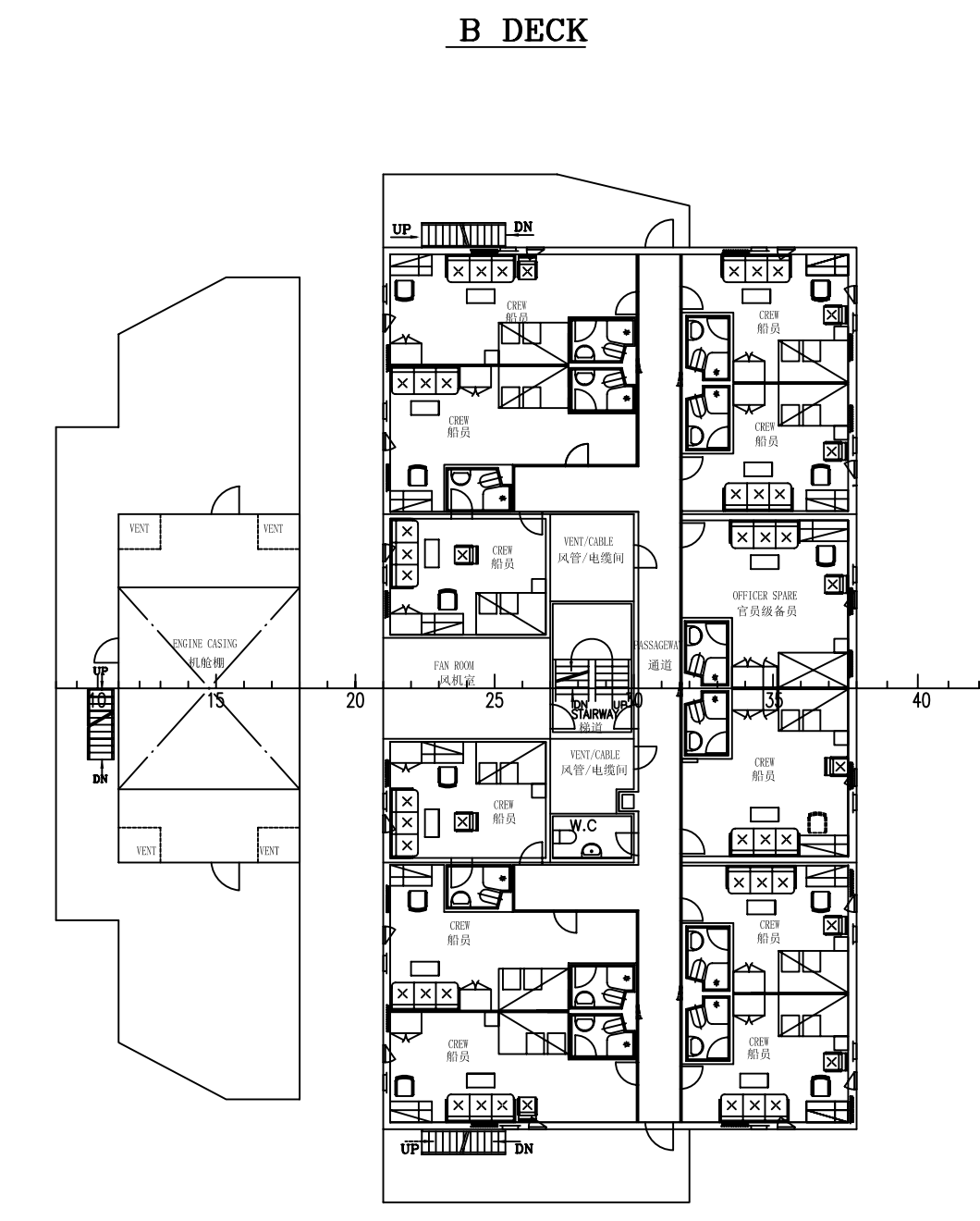
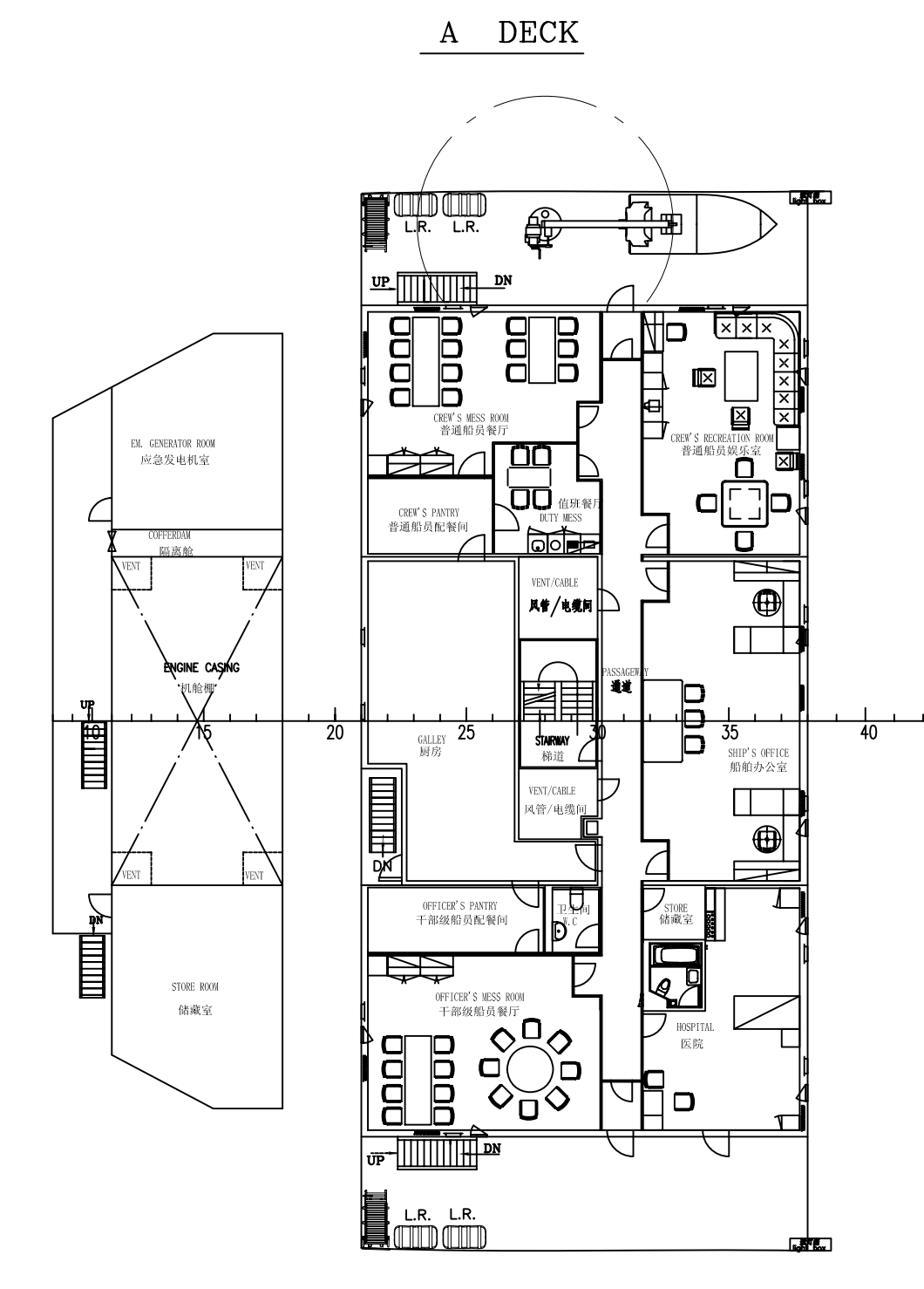


REVISION RECORD	REVISED BY	DATE	REASON



PRINCIPAL PARTICULARS

总长 LENGTH O.A.	abt. 229.00 m
垂线间长 LENGTH B.P.	223.50 m
型宽 BREADTH MLD.	32.26 m
型深 DEPTH MLD.	20.20 m
设计吃水 DESIGN DRAFT	12.20 m
结构吃水 SCANTLING DRAFT	14.45 m
载重量 DEADWEIGHT	abt. 82000 t
货舱容积 CARGO HOLD CAPACITY	abt. 97,000 m <sup>3</sup>
主机 MAIN ENGINE	B&W-SS60MC-C8-TII 1set
SMCR	10260kW X 105%/min
CSR(Q.85MCR)	8721kW X 99.5%/min
服务航速 SERVICE SPEED (CSR, 15% S.M.)	14.5 knots
续航力 ENDURANCE	abt. 22,000 n.mile
船员定员 COMPLEMENT	28 P
船级 CLASSIFICATION	ABS
*A1 (E), Bulk Carrier, BC-A (Hold 2, 4 & 6 may be empty), CSR, AB-CM, *AMS, *ACCU, GRAB (25), TCM, UWILD, ESP	

广州中船龙穴造船有限公司		船号	L0023
CSSC GUANGZHOU LONGJUE SHIPBUILDING CO., LTD.		图号	
图号	K0000102	船名	820000WT PANAMA BULK CARRIER
设计	2012.1.10	比例	1:200
校核	2012.4.10	材料	
审核	2011.1.10	重量	
核定	2011.1.10	修改版本	
制图	2011.1.10	REV.	